

PRE-ELEC® ELECTRICALLY CONDUCTIVE COMPOUNDS

PREMIX

Standard Grades

BF=Blown film EX=Extrusion BM=Blow Molding IM=Injection Molding

Polymer	Grade	BF	EX	BM	IM	MFI (g/10min)	Surface Resistance (Ω)	Typical Applications	Remarks
PE-LD PE-LLD	PRE-ELEC® PE 1271	•				1.7 (190°C/5kg) 35 (190°C/21.6kg)	<10 ⁵	Innerliners for FIBC, drums and bulk containers, bag-in-box for hazardous powders, layflat tubing and bags	For multi- and monolayer blown films
CO-POLYMERS	PRE-ELEC® CP 1316		•		•	12 (190°C/21.6kg)	<10 ³	Flexible hoses and parts	
CO-POLYMERS	PRE-ELEC® CP 1319	•	•			1.0 (190°C/5kg) 4.5 (190°C/10kg)	<10 ⁴	Foams, films	For extruded foams. Softer than PE 1271
CO-POLYMERS	PRE-ELEC® CP 1515		•			1.2 (190°C/5kg) 50 (190°C/21.6kg)	<10 ³	Foams	For block-process foams
PE-HD	PRE-ELEC® PE 1291		•	•		0.7 (190°C/10kg) 6 (190°C/21.6kg)	<10 ⁵	Containers, canisters, pipes, sheets	All-round grade for explosive areas
PE-HD	PRE-ELEC® PE 1294				•	2 (190°C/5kg) 80 (190°C/21.6kg)	<10 ⁵	Pallets, containers, automotive parts	High-flow
PE-HD	PRE-ELEC® PE 1201		•			3 (190°C/21.6kg)	<10 ⁵	For monolayer pressure pipes	PE 80
PE-HD	PRE-ELEC® PE 1202			•		2 (190°C/21.6kg)	<10 ⁵	Cost-effective grade for canisters	Can be diluted 15-20%
PE-HD	PRE-ELEC® TP 11270			•	•	15 (190°C/21.6kg)	<10 ⁵	Fuel filler heads, necks and pipes	FTM-number, low permeation, high flow for co-extruded filler pipes
PE-HD	PRE-ELEC® TP 14839				•	15 (190°C/21.6kg)	<10 ⁵	Fuel filler heads and necks	Economical TP 11270
PE-HD	PRE-ELEC® TP 14708GF				•	11 (190°C/21.6kg)	<10 ⁵	Fuel filler heads and necks	GF-reinforced

09/2017

PREMIX OY (HEAD OFFICE)

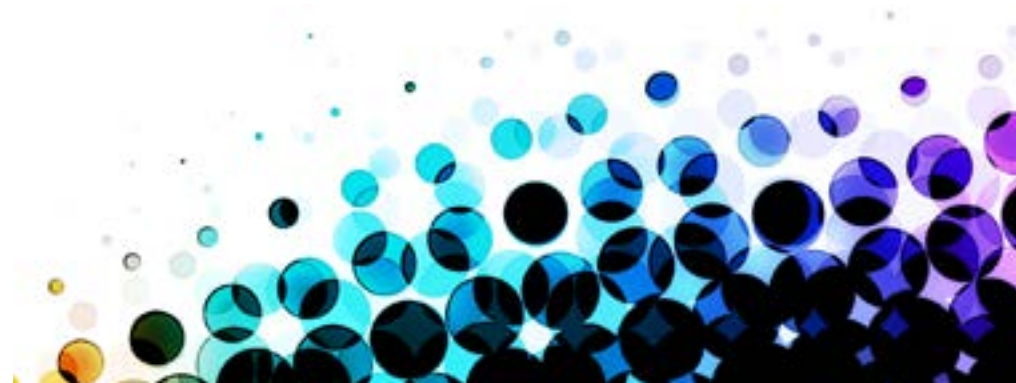
P.O. Box 12
Muovitie 4
FI-05201 Rajamäki
FINLAND
Tel. +358 9 878 041
Fax +358 9 8780 4400
firstname.lastname@premixgroup.com
www.premixgroup.com

PREMIX EUROPE GmbH

Sitz der Gesellschaft:
41564 Kaarst, GERMANY
HBR: 14540 (Amtsgericht Neuss)
Geschäftsführerin: Frau Hanna Ristola
Büro: Nordhackstedter Str. 14
24980 Schafflund, GERMANY
Tel: +49 0 4639 - 7832 15
Fax: +49 0 4639 - 7832 16

PREMIX TRADING (Shanghai) Ltd

Room 401-21, #2 Building, 690 Bibo Road
201203 Shanghai
China
Tel: +021-61042268
www.premixgroup.cn



PRE-ELEC® ELECTRICALLY CONDUCTIVE COMPOUNDS

PREMIX

Standard Grades

BF=Blown film EX=Extrusion BM=Blow Molding IM=Injection Molding

Polymer	Grade	BF	EX	BM	IM	MFI (g/10min)	Surface Resistance (Ω)	Typical Applications	Remarks
PP	PRE-ELEC® PP 1370				•	2 (230°C/2.16kg) 12 (230°C/5.0kg)	<10 ⁴	Boxes, crates	Conductive compound
PP	PRE-ELEC® PP 1375				•	20 (230°C/2.16kg)	<10 ⁴	Boxes, crates	High-flow conductive compound
PP	PRE-ELEC® PP 1350				•	3.5 (230°C/2.16kg) 21 (230°C/5.0kg)	<10 ⁴	Boxes, crates	Cost-effective conductive compound
PP	PRE-ELEC® PP 1351				•	6 (230°C/2.16kg) 28 (230°C/5.0kg)	<10 ⁵⁻⁸	Boxes, crates	Dissipative compound
PP	PRE-ELEC® PP 1380				•	1.5 (230°C/5kg)	<10 ²	Technical parts with low resistance, ECG electrodes	
PP	PRE-ELEC® PP 1383				•	14 (230°C/2.16kg)	<10 ³	Technical parts, pipette tips	High-flow
PP	PRE-ELEC® PP 1384		•			1 (230°C/2.16kg) 16 (230°C/5.0kg)	<10 ²	FIBC type C	For co-extruded PP tape
PP	PRE-ELEC® PP 1397		•			1.2 (230°C/2.16kg) 6 (230°C/5.0kg)	<10 ⁴	Corrugated boards, sleeve pallets, thermoformed trays	Rigid, high-flow and low moisture pick up

PREMIX OY (HEAD OFFICE)

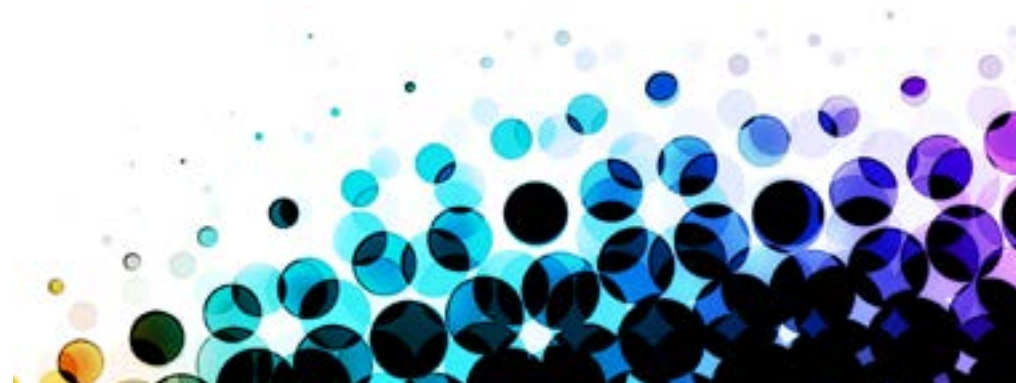
P.O. Box 12
Muovitie 4
FI-05201 Rajamäki
FINLAND
Tel. +358 9 878 041
Fax +358 9 8780 4400
firstname.lastname@premixgroup.com
www.premixgroup.com

PREMIX EUROPE GmbH

Sitz der Gesellschaft:
41564 Kaarst, GERMANY
HBR: 14540 (Amtsgericht Neuss)
Geschäftsführerin: Frau Hanna Ristola
Büro: Nordhackstedter Str. 14
24980 Schafflund, GERMANY
Tel: +49 0 4639 - 7832 15
Fax: +49 0 4639 - 7832 16

PREMIX TRADING (Shanghai) Ltd

Room 401-21, #2 Building, 690 Bibo Road
201203 Shanghai
China
Tel: +021-61042268
www.premixgroup.cn



PRE-ELEC® ELECTRICALLY CONDUCTIVE COMPOUNDS

PREMIX

Standard Grades

BF=Blown film EX=Extrusion BM=Blow Molding IM=Injection Molding

Polymer	Grade	BF	EX	BM	IM	MFI (g/10min)	Surface Resistance (Ω)	Typical Applications	Remarks
PS	PRE-ELEC® PS 1324		•			0.8 (200°C/5kg) 45 (200°C/21.6kg)	<10 ⁵	Sheets, thermoformed trays	Excellent surface and mechanical properties
PS	PRE-ELEC® PS 1326				•	1.2 (200°C/5kg) 55 (200°C/21.6kg)	<10 ⁴	Boxes, reels	
PS	PRE-ELEC® PS 1328				•	3 (200°C/5kg) 70 (200°C/21.6kg)	<10 ⁵	Boxes, tote bins, reels	High-gloss surface
PS	PRE-ELEC® PS 1331		•			1.8 (200°C/5kg) 60 (200°C/21.6kg)	<10 ⁶	Sheets, thermoformed trays	Excellent mechanical properties, increased chemical resistance.
ABS	PRE-ELEC® ABS 1410				•	15 (220°C/10kg)	<10 ⁶	Technical parts, precise moldings	Good impact strength
ABS	PRE-ELEC® ABS 1415		•			2.5 (220°C/10kg)	<10 ⁶	Sheets, thermoformed trays	Higher operating temperature
PA	PRE-ELEC® PA 1406				•	-	<10 ⁷	Caster-wheels, construction parts	Carbon fiber compound, for ATEX areas
PA	PRE-ELEC® PA 1408				•	0.7 (275°C/5kg) 13 (275°C/10kg)	<10 ⁸	Transport covers, construction parts	Excellent moldability, also for electrostatic painting applications
PBT	PRE-ELEC® PBT 1455				•	14 (240°C/10kg) 60 (240°C/21.6kg)	<10 ⁴	Construction parts	For ATEX areas
PC	PRE-ELEC® PC 1431				•	1 (300°C/1.2kg) 4 (300°C/21.6kg)	<10 ⁶	Construction parts	Good impact strength, higher rigidity and very good temperature resistance
SEBS	PRE-ELEC® TPE 1502		•			4 (190°C/10kg)	<10 ³	Sheets and profiles	Shore A hardness 65
SEBS	PRE-ELEC® TPE 1504		•		•	18 (190°C/10kg)	<10 ⁵	Gaskets, soft technical parts	Shore A hardness 70
TPU	PRE-ELEC® TPU 1510		•		•	10 (190°C/10kg)	<10 ⁴	Cables, belts, sheets, soft technical parts	Polyether based TPU, Shore D hardness 45
TPU	PRE-ELEC® TPU 1511		•		•	2 (190°C/10kg)	<10 ²	Profiles, tubes, soft technical parts	Polyester based TPU, Shore D hardness 52

PREMIX OY (HEAD OFFICE)

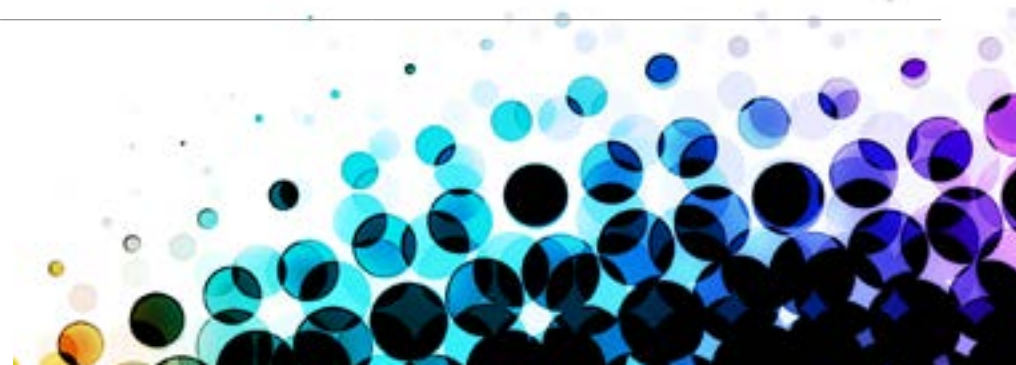
P.O. Box 12
Muovitie 4
FI-05201 Rajamäki
FINLAND
Tel. +358 9 878 041
Fax +358 9 8780 4400
firstname.lastname@premixgroup.com
www.premixgroup.com

PREMIX EUROPE GmbH

Sitz der Gesellschaft:
41564 Kaarst, GERMANY
HBR: 14540 (Amtsgericht Neuss)
Geschäftsführerin: Frau Hanna Ristola
Büro: Nordhackstedter Str. 14
24980 Schafflund, GERMANY
Tel: +49 0 4639 - 7832 15
Fax: +49 0 4639 - 7832 16

PREMIX TRADING (Shanghai) Ltd

Room 401-21, #2 Building, 690 Bibo Road
201203 Shanghai
China
Tel: +021-61042268
www.premixgroup.cn



PRE-ELEC® ELECTRICALLY CONDUCTIVE CONCENTRATES

PREMIX

Standard Grades

BF=Blown film EX=Extrusion BM=Blow Molding IM=Injection Molding

Polymer	Grade	BF	EX	BM	IM	Typical Dilution Rate	Typical Applications
PP	PRE-ELEC® PP 1381				•	40–50 %	Large plastic parts, e.g. boxes, crates, pallets
PP	PRE-ELEC® PP 1393		•			40–50 %	Corrugated boards
PE-HD	PRE-ELEC® PE 1250		•			40–50 %	Economical grade for pipes, sheets, housings
PE-HD	PRE-ELEC® PE 1296		•	•	•	40–50 %	General grade for extrusion, injection and blow molding
PS	PRE-ELEC® PS 1340		•			50–60 %	Sheets, thermoformed trays
PA	PRE-ELEC® PA 1411				•	40–50 %	Technical parts

Did not find suitable grade for your needs? Please contact our sales team or local distributor.
You can also find specific product and contact information from www.premixgroup.com!

PRE-ELEC® is registered trademark of Premix.

PREMIX OY (HEAD OFFICE)

P.O. Box 12
Muovitie 4
FI-05201 Rajamäki
FINLAND
Tel. +358 9 878 041
Fax +358 9 8780 4400
firstname.lastname@premixgroup.com
www.premixgroup.com

PREMIX EUROPE GmbH

Sitz der Gesellschaft:
41564 Kaarst, GERMANY
HBR: 14540 (Amtsgericht Neuss)
Geschäftsführerin: Frau Hanna Ristola
Büro: Nordhackstedter Str. 14
24980 Schafflund, GERMANY
Tel: +49 0 4639 - 7832 15
Fax: +49 0 4639 - 7832 16

PREMIX TRADING (Shanghai) Ltd

Room 401-21, #2 Building, 690 Bibo Road
201203 Shanghai
China
Tel: +021-61042268
www.premixgroup.cn

