

PRE-ELEC® ELECTRICALLY CONDUCTIVE COMPOUNDS



Extrusion / Sheets and Thermoformed Trays

Polymer	Grade	MFI (g/10min)	Surface Resistance (Ω)	Typical Applications	Remarks
ABS	PRE-ELEC® ABS 1415	2.5 (220°C/10kg)	$<10^6$	Sheets, thermoformed trays	Higher operating temperature
PE-HD	PRE-ELEC® PE 1291	0.7 (190°C/10kg) 6 (190°C/21.6kg)	$<10^5$	PE-HD sheets	All-round grade for explosive areas
PE-HD	PRE-ELEC® PE 1250	1.6 (190°C/21.6kg)	$<10^{6*}$	Concentrate for cost-effective sheet applications	Can be diluted up to 50% with virgin or recycled PE-HD
PP	PRE-ELEC® PP 1397	1.2 (230°C/2.16kg) 6 (230°C/5kg)	$<10^4$	Corrugated board, sleeve pallets, thermoformed trays	Rigid, high-flow and low moisture pick-up
PP	PRE-ELEC® PP 1393	0.5 (230°C/5kg)	$<10^{5**}$	Concentrate for corrugated board	Can be diluted up to 50% with virgin or recycled PP
PS	PRE-ELEC® PS 1324	0.8 (200°C/5kg) 45 (200°C/21.6kg)	$<10^5$	Sheets, thermoformed trays	Excellent surface and mechanical properties
PS	PRE-ELEC® PS 1331	1.8 (200°C/5kg) 60 (200°C/21.6kg)	$<10^6$	Sheets, thermoformed trays	Excellent mechanical properties, high chemical resistance
PS	PRE-ELEC® PS 1340	1.2 (200°C/21.6kg)	$<10^{5***}$	Concentrate for cost-effective sheet applications	Can be diluted up to 60% with virgin or recycled PS

* PE 1250 blended with 50% of PE-HD

** PP 1393 blended with 30% of PPC

*** PS 1340 blended with 50% of HIPS

09/2017

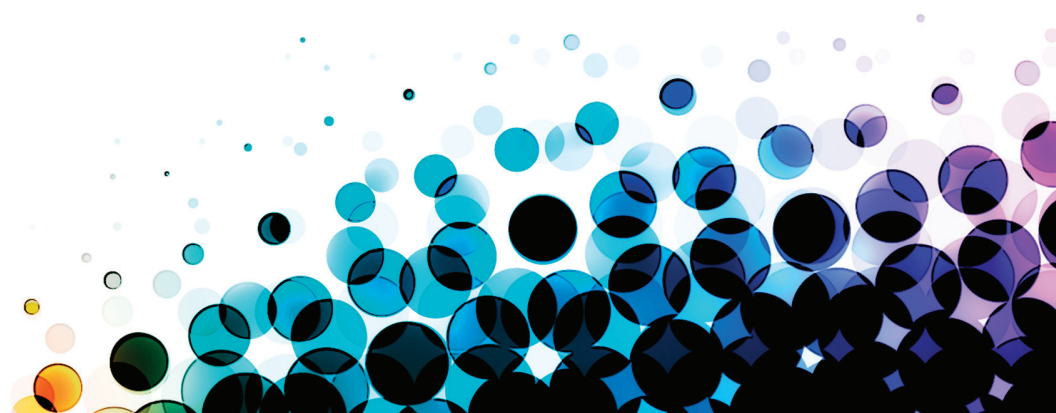
PREMIX OY (HEAD OFFICE)

P.O. Box 12
Muovitie 4
FI-05201 Rajamäki
FINLAND
Tel. +358 9 878 041
Fax +358 9 8780 4400
firstname.lastname@premixgroup.com
www.premixgroup.com

PREMIX EUROPE GmbH

Sitz der Gesellschaft:
41564 Kaarst, GERMANY
HBR: 14540 (Amtsgericht Neuss)
Geschäftsführerin: Frau Hanna Ristola
Büro: Nordhackstedter Str. 14
24980 Schafflund, GERMANY
Tel: +49 0 4639 - 7832 15
Fax: +49 0 4639 - 7832 16

PRE-ELEC® is registered trademark of Premix.



PRE-ELEC® ELECTRICALLY CONDUCTIVE COMPOUNDS



Extrusion / Pipes and Profiles

Polymer	Grade	MFI (g/10min)	Surface Resistance (Ω)	Typical Applications	Remarks
PE-HD	PRE-ELEC® PE 1291	0.7 (190°C/10kg) 6 (190°C/21.6kg)	$<10^5$	All-round grade for mono- and co-extrusion	
PE-HD	PRE-ELEC® PE 1201	3 (190°C/21.6kg)	$<10^5$	For monolayer pressure pipes	PE 80
PE-HD	PRE-ELEC® PE 1250	1.6 (190°C/21.6kg)	$<10^{6*}$	Economical concentrate for mono- and co-extrusion	Can be diluted up to 50% with virgin or recycled PE-HD
PE-HD	PRE-ELEC® PE 1296	0.6 (190°C/21.6kg)	$<10^{5**}$	High-performance concentrate for mono- and co-extrusion	Can be diluted up to 50% with recycled virgin or recycled PE-HD

* PE 1250 blended with 50% of PE-HD

** PE 1296 blended with 40% of PE-HD

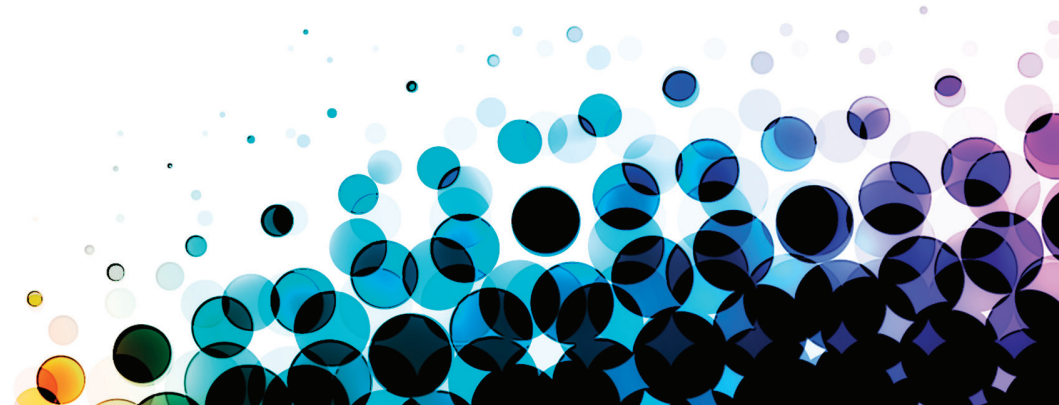
PREMIX OY (HEAD OFFICE)

P.O. Box 12
Muovitie 4
FI-05201 Rajamäki
FINLAND
Tel. +358 9 878 041
Fax +358 9 8780 4400
firstname.lastname@premixgroup.com
www.premixgroup.com

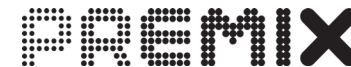
PREMIX EUROPE GmbH

Sitz der Gesellschaft:
41564 Kaarst, GERMANY
HBR: 14540 (Amtsgericht Neuss)
Geschäftsführerin: Frau Hanna Ristola
Büro: Nordhackstedter Str. 14
24980 Schafflund, GERMANY
Tel: +49 0 4639 - 7832 15
Fax: +49 0 4639 - 7832 16

PRE-ELEC® is registered trademark of Premix.



PRE-ELEC® ELECTRICALLY CONDUCTIVE COMPOUNDS



Extrusion / Blow Molding

Polymer	Grade	MFI (g/10min)	Surface Resistance (Ω)	Typical Applications	Remarks
PE-HD	PRE-ELEC® PE 1291	0.7 (190°C/10kg) 6 (190°C/21.6kg)	$<10^5$	All-round compound for canisters, containers and IBC's	Excellent surface and easy processability Can be diluted up to 20%
PE-HD	PRE-ELEC® PE 1202	3 (190°C/21.6kg)	$<10^5$	Cost-effective compound for canisters	Can be diluted up to 15-20%
PE-HD	PRE-ELEC® PE 1296	0.6 (190°C/21.6kg)	$<10^{5*}$	Concentrate for canisters and containers	Can be diluted up to 50% with recycled virgin or recycled PE-HD

* PE 1296 blended with 40% of PE-HD

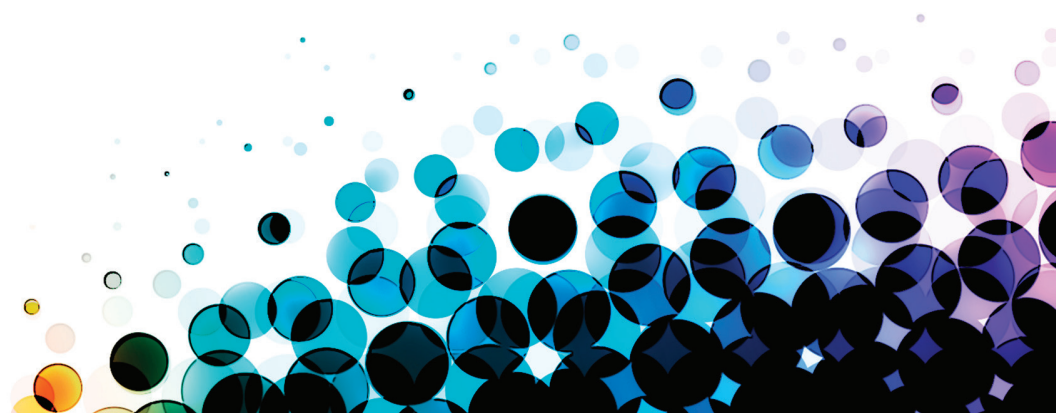
PREMIX OY (HEAD OFFICE)

P.O. Box 12
Muovitie 4
FI-05201 Rajamäki
FINLAND
Tel. +358 9 878 041
Fax +358 9 8780 4400
firstname.lastname@premixgroup.com
www.premixgroup.com

PREMIX EUROPE GmbH

Sitz der Gesellschaft:
41564 Kaarst, GERMANY
HBR: 14540 (Amtsgericht Neuss)
Geschäftsführerin: Frau Hanna Ristola
Büro: Nordhackstedter Str. 14
24980 Schafflund, GERMANY
Tel: +49 0 4639 - 7832 15
Fax: +49 0 4639 - 7832 16

PRE-ELEC® is registered trademark of Premix.



PRE-ELEC® ELECTRICALLY CONDUCTIVE COMPOUNDS



Extrusion / Other Applications

Polymer	Grade	MFI (g/10min)	Surface Resistance (Ω)	Typical Applications	Remarks
PE-HD PE-LLD	PRE-ELEC® PE 1271	1.7 (190°/5kg) 35 (190°/21.6kg)	<10 ⁵	Innerliners for FIBC drums and bulk containers, bag-in-box for hazardous powders, layflat tubing and bags	For multi- and mono-layer blown film
COPOLYMERS	PRE-ELEC® CP 1316	12 (190°C/21.6kg)	<10 ³	Flexible hoses and parts	
COPOLYMERS	PRE-ELEC® CP 1319	1.7 (190°C/5kg)	<10 ⁴	Foams and films	For extruded foams, softer than PE 1271
COPOLYMERS	PRE-ELEC® CP 1515	1.2 (190°C/5kg)	<10 ³	Foams	For block-process foams
PP	PRE-ELEC® PP 1384	1 (230°C/2.16kg)	<10 ²	FIBC type C	For co-extruded PP-tape
SEBS	PRE-ELEC® TPE 1502	4 (190°C/10kg)	<10 ³	Profiles, soft technical parts	Shore A hardness 65
SEBS	PRE-ELEC® TPE 1504	18 (190°C/10kg)	<10 ⁵	Profiles, soft technical parts	Shore A hardness 70
TPU	PRE-ELEC® TPU 1510	10 (190°C/10kg)	<10 ⁴	Cables, belts and sheets	Polyether based TPU, shore D hardness 45
TPU	PRE-ELEC® TPU 1511	2 (190°C/10kg)	<10 ²	Profiles and tubes	Polyester based TPU, shore D hardness 52

Did not find suitable grade for your needs? Please contact our sales team or local distributor.
You can also find specific product and contact information from www.premixgroup.com!

PREMIX OY (HEAD OFFICE)

P.O. Box 12
Muovitie 4
FI-05201 Rajamäki
FINLAND
Tel. +358 9 878 041
Fax +358 9 8780 4400
firstname.lastname@premixgroup.com
www.premixgroup.com

PREMIX EUROPE GmbH

Sitz der Gesellschaft:
41564 Kaarst, GERMANY
HBR: 14540 (Amtsgericht Neuss)
Geschäftsführerin: Frau Hanna Ristola
Büro: Nordhackstedter Str. 14
24980 Schafflund, GERMANY
Tel: +49 0 4639 - 7832 15
Fax: +49 0 4639 - 7832 16

PRE-ELEC® is registered trademark of Premix.

